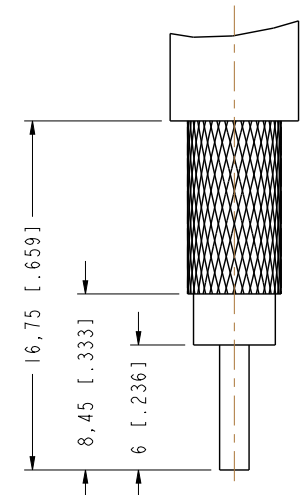
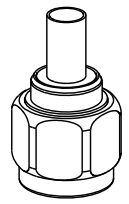


THIRD ANGLE PROJ.		REVISONS	
REV	DESCRIPTION	DATE	ECO
A	RELEASE TO MFG.	26-Mar-15	2887
		APPR	BCG

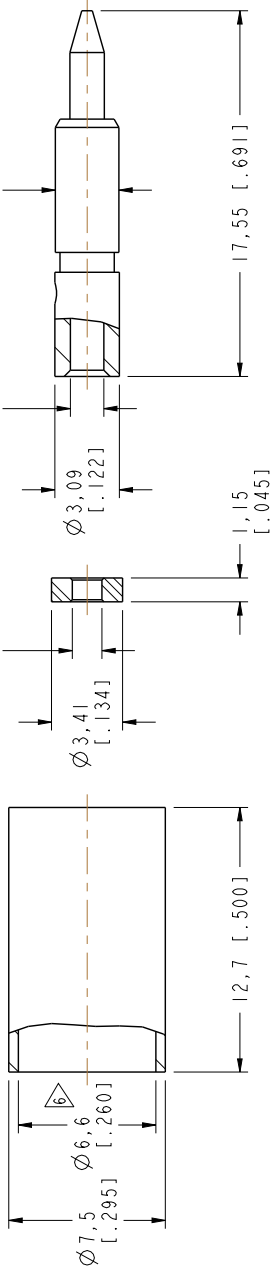
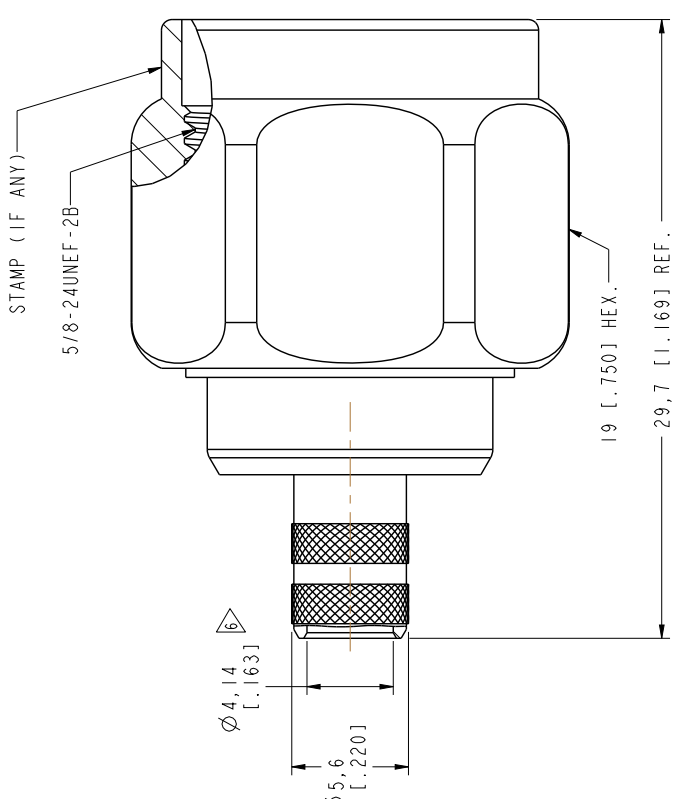
- NOTES:
- MATERIALS AND FINISHES:
 - FERRULE - BRASS, WHITE BRONZE PLATING
 - DISC INSULATOR - PTFE, NATURAL
 - CONTACT - BRASS, GOLD PLATING
 - BODY - BRASS, WHITE BRONZE PLATING
 - RETAINER RING - PHOSPHOR BRONZE, NATURAL
 - INSULATOR - PTFE, NATURAL
 - GASKET - SILICONE RUBBER, RED
 - COUPLING NUT - BRASS, WHITE BRONZE PLATING
 - ELECTRICAL:
 - A. IMPEDANCE: 50 OHM
 - B. FREQUENCY RANGE: 0-11 GHz
 - C. VSWR: 1.3 (-17.692 dB) MAX. @ 0-6GHz
 - D. D.W.V: 1500 VRMS, MIN.
 - MECHANICAL:
 - A. DURABILITY: 500 CYCLES MIN.
 - B. TEMPERATURE RANGE: -65°C TO +165°C
 - CRIMPED FERRULE HEX. CRIMP SIZE .255"
 - CRIMPED CONTACT PIN HEX. CRIMP SIZE .100" OR SOLDER



RECOMMENDED
CABLE STRIPPING DIM'S



SCALE 1:000



CUSTOMER OUTLINE DRAWING
ALL OTHER SHEETS ARE FOR INTERNAL USE ONLY

UNLESS OTHERWISE SPECIFIED, DIMENSIONS ARE IN METRIC AND TOLERANCES ARE:		MATERIAL	
<0.5mm	±0.1mm	-	
0.5 - 6mm	±0.2mm	DRAWN	DATE
6 - 30mm	±0.3mm	M.ZHANG	26-Mar-15
30 - 120mm	±0.5mm	ENGINEER	DATE
±0.05mm	±0.1mm	S.DUAN	26-Mar-15
NOTICE - These drawings, specifications, or other data (1) are, and remain the property of Amphenol Corp. (2) must be obtained upon request, and (3) are confidential and not to be disclosed to any person other than those to whom they are given by Amphenol Corp. The furnishing of these drawings, specifications, or other data by Amphenol Corp., or to any other person in any manner, is not to be regarded as an implied or otherwise in any manner licensing, granting rights to any person to use, reproduce, or otherwise in any way be related to product, process or design, patented or otherwise, that may in any way be related to or disclosed by said drawings, specifications, or other data.		APPROVED	DATE
		B. C. GLEISSNER	26-Mar-15
		CAD FILE	
		FINISH	
		REFERENCE	
		"N1Z1B1-AT5GP-LMR240-50"	
		CONFIGURATION LEVEL: In Work	
		TITLE	
		N CRIMP PLUG, WITH A	
		19MM HEX COUPLING NUT	
		(FOR LMR-240 CABLE)	
		SCALE: 4:0:1.0	SHEET 3 OF 3
		DWG SIZE	REV
		B	A
		Amphenol	
		Connex	
		DRAWING NO.	
		ITEM NO.	
		PART NO.	172395