



Data sheet

Three-phase motors with squirrel cage rotor, standard motors
Housing grey cast iron

Date 10.5.2007

Manufacturer
VEM motors Thurm GmbH
Äußere Dresdener Str. 35

Customer

D-08066 Zwickau

Supply conditions and/or technical rules:

DIN EN 60034-1

Type	K21R 63 G4				Insulation class	F	
Duty type	S1				Ambient temperature	(°C)	40
Design output	(kW)	0,18		Altitude above sea level	(m)	1000	
Number of poles	(-)	4		Degree of protection	IP 55		
Design frequency	(Hz)	50		Moment of inertia	(kgm ²)	0,00024	
Design speed	(min ⁻¹)	1.360		Motor weight	(kg)	5,2	
Voltage	(V)	400	690	A-wtd. sound pressure level	(dB)	41	
Connection	(-)	D	Y	Bearing, D-end	6201 2Z C3		
Current	(A)	0,65	0,38	Bearing, N-end	6201 2Z C3		
Rel. starting current	(-)	3,3		Relubrication interval	(h)		
Rel. starting torque	(-)	2		Grease type			
Rel. pull-up torque	(-)	2		Grease quantity	(g)		
Rel. pull-out torque	(-)	2,3					
Partial load	(%)	100	75	50	25		
Power factor	(-)	0,66	0,59	0,47	0,37		
Efficiency	(%)	61	56,5	47	30		

Design selection data

Type of mounting:

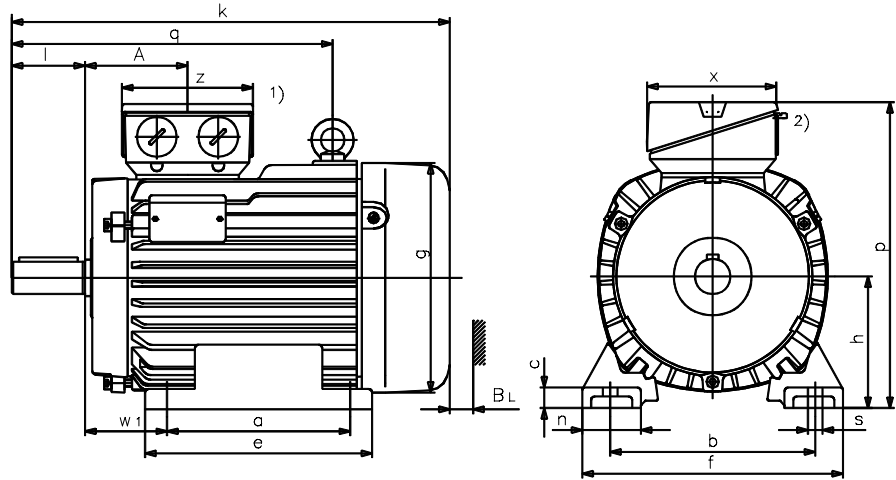
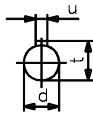
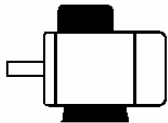
IM B3

Terminal box:

standard, on the top

Flange:

--



Motor	a	b	c	e	f	g	g1	h	k	k1	m	m1	n	o
	B	A	HA	BB	AB	AC	-	H	L	LC	BA	-	AA	-
	80	100	10	100	128	109	-	63	179	-	-	-	28	-
	p	q	s	w1	w2	A	A1	BL	a1	b1	c1	e1	f1	s1
	HD	-	K	C	CA	-	-	-	P	N	LA	M	T	S
	161	-	8	40	-	58	-	14	-	-	-	-	-	-
Shaft end-DS	d	l	t	u	d1	l1	t1	u1	Tolerance					
	D	E	GA	F	DA	EA	GC	FA	b1	d	d1	h	for mating pieces	
	11	23	12,5	4	-	-	-	-	N	D	DA	H	H7	
									j6	k6	k6	-0,5		
Terminal box	x	z	r	r max	r1	r1 max	Centre bore				Motor weight (kg)			
	-	92	M20x1,5	13			DIN 332-DS M4				5,2			