

# Solenoid Valves

## EVK 06/C5

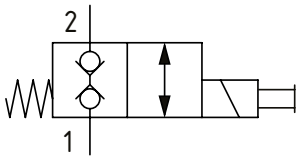
Solenoid Valve, 2-way, Poppet Type, Normally Closed, Direct Acting, Double Blocking

210 bar [3000 psi] • 40 l/min [10.6 US gpm]

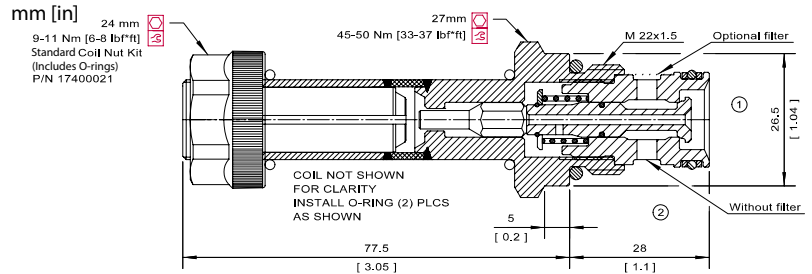
### OPERATION AND DESCRIPTION

This is a 2-way, 2-position, poppet type, direct acting, normally closed, bi-directional solenoid valve. In its de-energized condition, flow is blocked in both directions. Leakage in either direction is kept to a minimum due to the poppet design. When energized, flow can take place from port 2 to 1 and from 1 to 2. These valves come standard with a push pin manual override. These valves can be used to hold loads in position or interrupt a pressure line where flow is expected to pass in both directions in the de-energized condition. They do not suffer from momentary opening due to shock pressures.

### SCHEMATIC



### DIMENSIONS

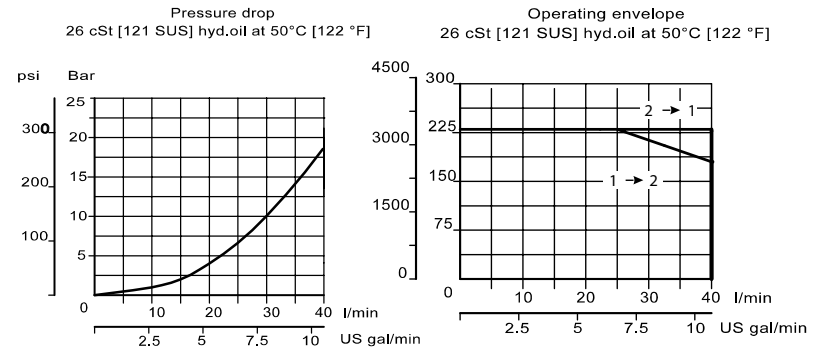


### PERFORMANCE DATA

Rated Pressure*	210 bar [3000 psi]
Flow Capability	40 l/min [10.6 US gpm]
Leakage	
Coil Options	M16, R16
Weight	0.43 kg [0.95 lb]
Cavity	NCS06/2

\*Rated Pressure based on NFPA fatigue test standards (at 1 million cycles)

### PERFORMANCE CURVES



### MODEL CODE

**EVK 06/C5 - F - 12D - DE - PB - 00 - B**

#### Filter Option

Omit - No filter  
F - Filter 300 µm

#### Coil Voltage

Standard Coil Code	Robust Coil Code	Coil Voltage
00	R00	No Coil, nut included*
10D	R10D	10 VDC
12D	R12D	12 VDC
20D	R20D	20 VDC
24D	R24D	24 VDC
110A		110 VAC**
220A		220 VAC**

\*Standard Coil - Plastic coil nut and o-rings (p/n 17400021)

\*\*Robust Coil - Steel coil nut and no o-rings (p/n 173804910)

\*\*DIN only - external rectifier needed

#### Connector Type

Standard Coil Code	Robust Coil Code	Connector Type
00	00	No Coil
AJ		Amp Junior
AJD		Amp Junior with Diode
AS	AS	AMP SuperSeal 1.5
ASD	ASDB*	AMP SuperSeal with Diode
DE	DE	Deutsch
DED	DEDB*	Deutsch with Diode
FL	FL	Flying Leads
FLD	FLDB*	Flying Leads with Diode
DN		DIN 43650

\*Bi-directional diode

#### Seal Option

Code	Seal kit
B-Buna - N	230000440
V-Viton	230000710

#### Housing

Code	Ports	Housing Model Code
00	No Housing	
DG6S	#6 SAE, AI	NCS06/2 - DG -6S
DG8S	#8 SAE, AI	NCS06/2 - DG -8S
DG3/8	3/8 BSP, AI	NCS06/2 - DG -3/8
DG1/2	1/2 BSP, AI	NCS06/2 - DG -1/2

\* Aluminum bodies are to be used for pressures less than 210 bar [3000 psi].

\* Additional housings available

#### Manual Override Option

Omit - Push Pin  
PB - Push Button  
SPS - Screw Type  
OPS - Protected Push Pin  
PAT - Push and Twist